

# Morecambe Offshore Windfarm: Generation Assets Environmental Statement

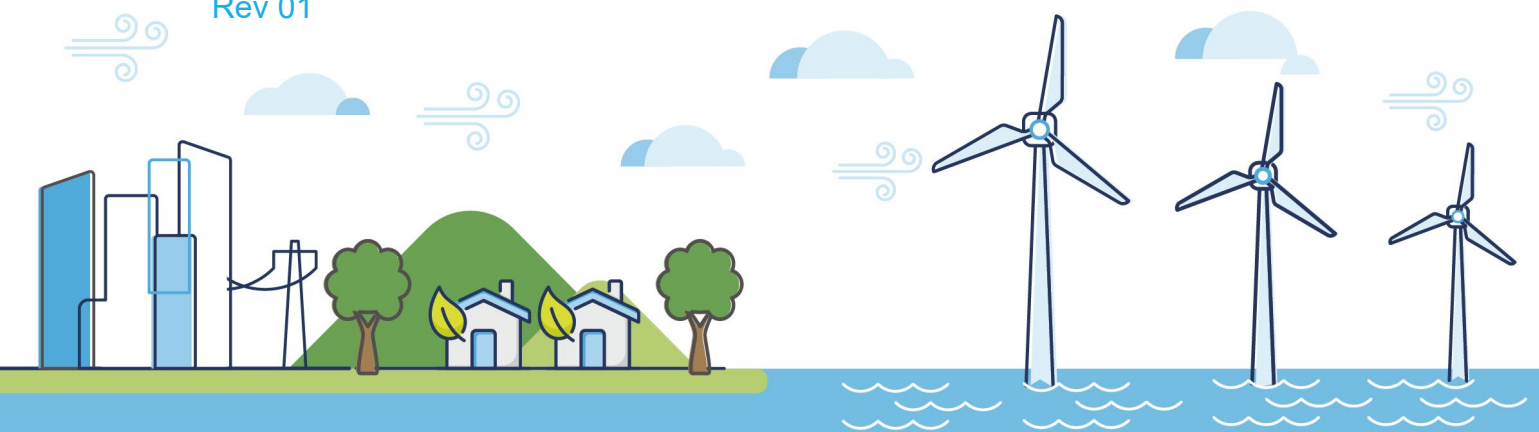
## Volume 5

### Chapter 18 SLVIA Figures (Part 5 of 34)

PINS Document Reference: 5.3.18.5

APFP Regulation: 5(2)(a)

Rev 01

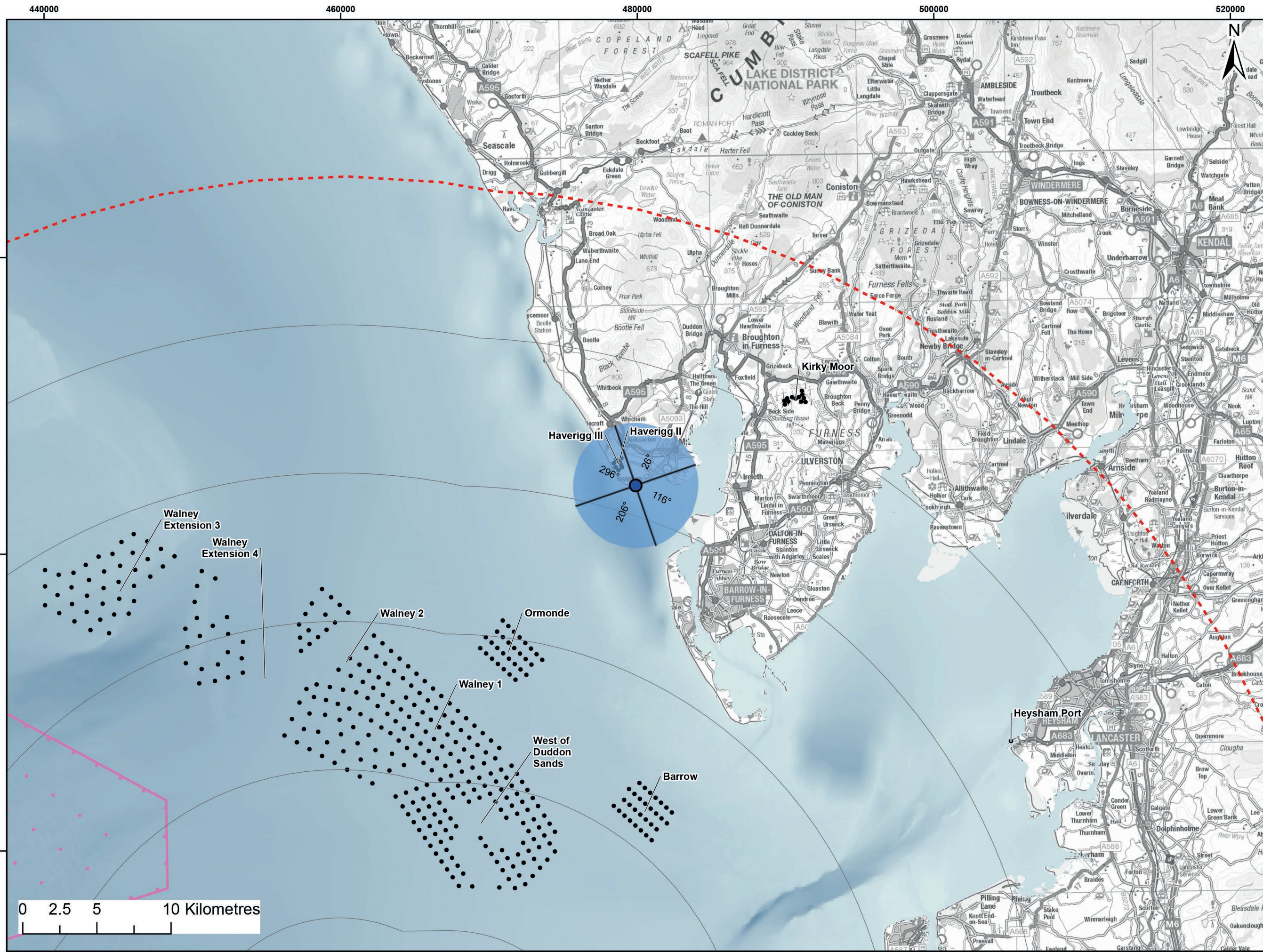


## Document History

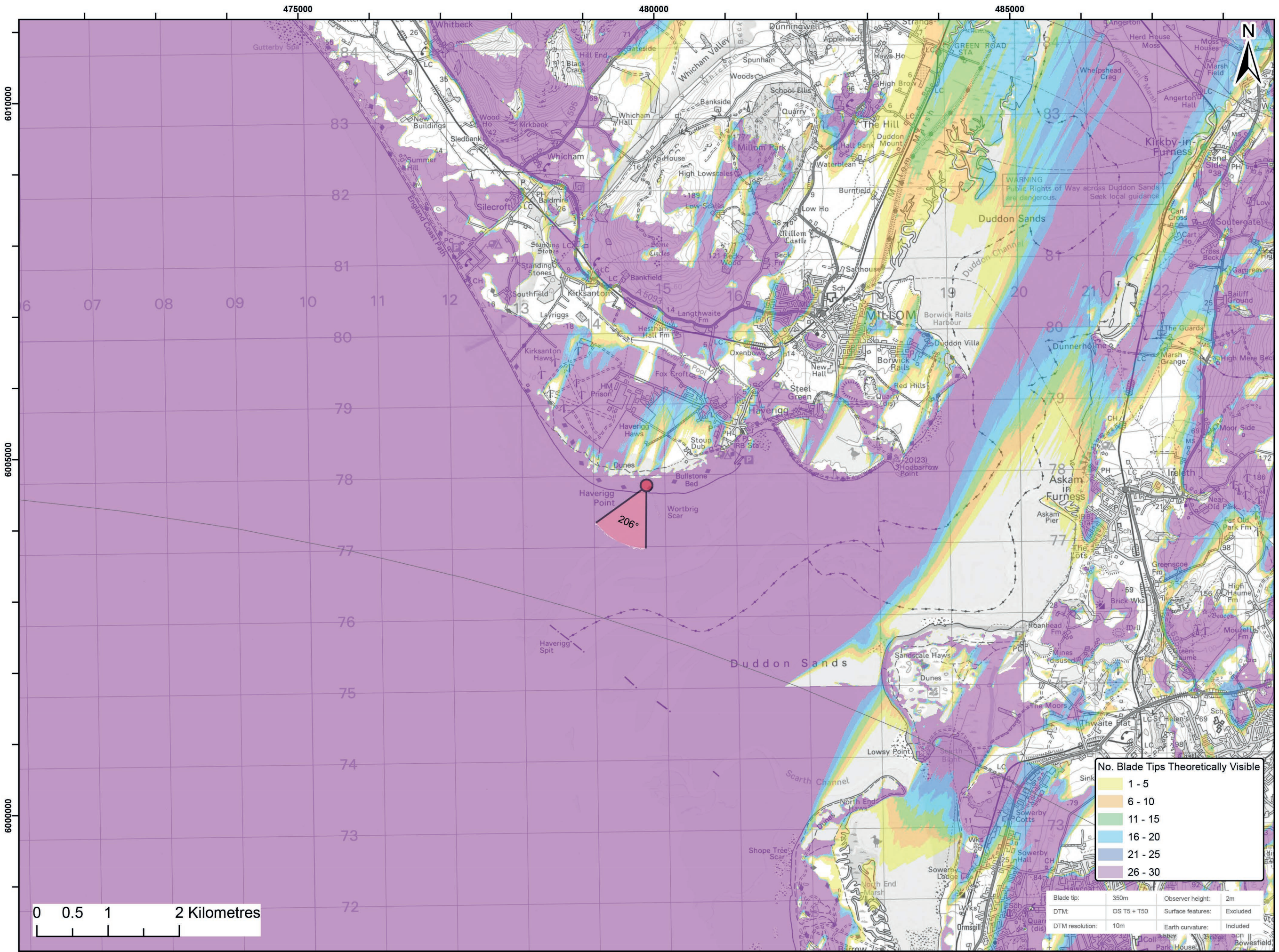
<b>Doc No</b>	MOR001-FLO-CON-ENV-FIG-1180	<b>Rev</b>	01
<b>Alt Doc No</b>	PC1165-RHD-ES-XX-DG-Z-0018		
<b>Document Status</b>	Approved for Use	<b>Doc Date</b>	May 2024
<b>PINS Doc Ref</b>	5.3.18.5	<b>APFP Ref</b>	5(2)(a)

Rev	Date	Doc Status	Originator	Reviewer	Approver	Modifications
01	May 2024	Approved for Use	Royal HaskoningDHV	Morecambe Offshore Windfarm Ltd	Morecambe Offshore Windfarm Ltd	n/a





Viewpoint Location Plan Baseline Panorama (90 Degree View)  
Scale: 1:200,000



Viewpoint Location Plan (53.5 Degree View)  
Scale: 1:50,000

**Legend:**

- Morecambe Offshore Wind Farm - Assumed WTG locations (30 x BT 310m(HAT))
- ▲ 90 Degree Field of View
- ▼ 53.5 Degree Field of View
- 10km Radii
- 60km Study Area
- Morecambe Offshore Windfarm Site

**Cumulative Wind Farms Status**

- Operational
- Under Construction
- Consented
- Application
- Scoping
- Pre-Application

© Crown copyright and database rights (2023) Ordnance Survey 0100031673.

Report: Morecambe Offshore Windfarm: Generation Assets Environmental Statement

Title: Viewpoint 2: Haverigg Point

Figure: 18.25a | Drawing No: 211609

Revision:	Date:	Drawn:	Checked:	Size:	Scale:
P02	25/09/2023	RA	SM	A3	1:50,000

Co-ordinate system: WGS 1984 UTM Zone 30N

Viewpoint Location Plan (53.5 Degree View)  
Scale: 1:50,000





Baseline photograph

This image provides landscape and visual context only



Wireline drawing

<b>OS reference:</b> 314743 E 477860 N	<b>Horizontal field of view:</b> 90° (cylindrical projection)	<b>Camera:</b> Canon EOS 5D Mark II
<b>Eye level:</b> 9.41 m AOD	<b>Principal distance:</b> 522 mm	<b>Lens:</b> EF50mm f/1.4 USM
<b>Direction of view:</b> 116°		<b>Camera height:</b> 1.5 m AGL
<b>Nearest turbine:</b> 42.207 km		<b>Date and time:</b> 08/08/2022, 17:02

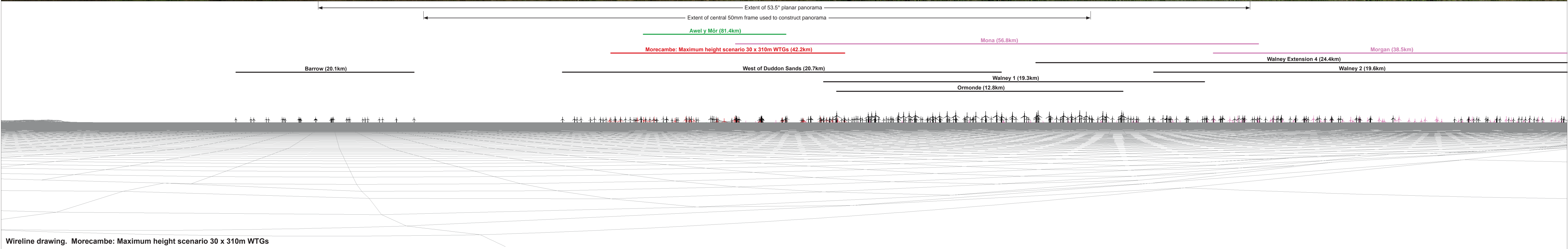
**Figure: 18:25b**  
**Viewpoint 2: Haverigg Point**





Baseline photograph

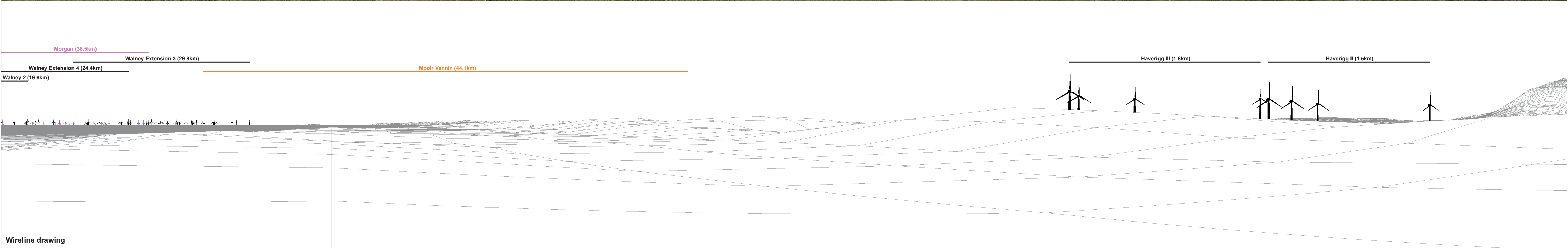
This image provides landscape and visual context only



OS reference:	314743 E 477860 N	Horizontal field of view:	90° (cylindrical projection)	Camera:	Canon EOS 5D Mark II
Eye level:	9.41 m AOD	Principal distance:	522 mm	Lens:	EF50mm f/1.4 USM
Direction of view:	206°			Camera height:	1.5 m AGL
Nearest turbine:	42.207 km			Date and time:	08/08/2022, 17:02

Figure: 18:25c  
Viewpoint 2: Haverigg Point

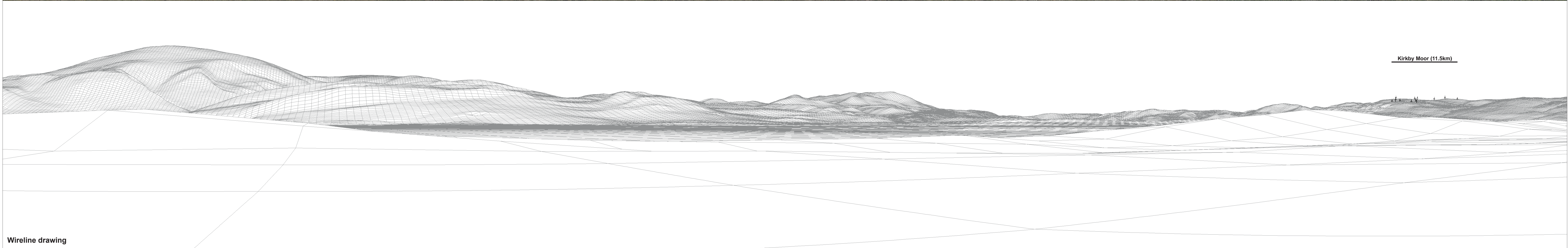




OS reference:	314743 E 477860 N	Horizontal field of view:	90° (cylindrical projection)	Camera:	Canon EOS 5D Mark II
Eye level:	9.41 m AOD	Principal distance:	522 mm	Lens:	EF50mm f/1.4 USM
Direction of view:	296°			Camera height:	1.5 m AGL
Nearest turbine:	42.207 km			Date and time:	08/08/2022, 17:02

**Figure: 18:25d**  
**Viewpoint 2: Haverigg Point**

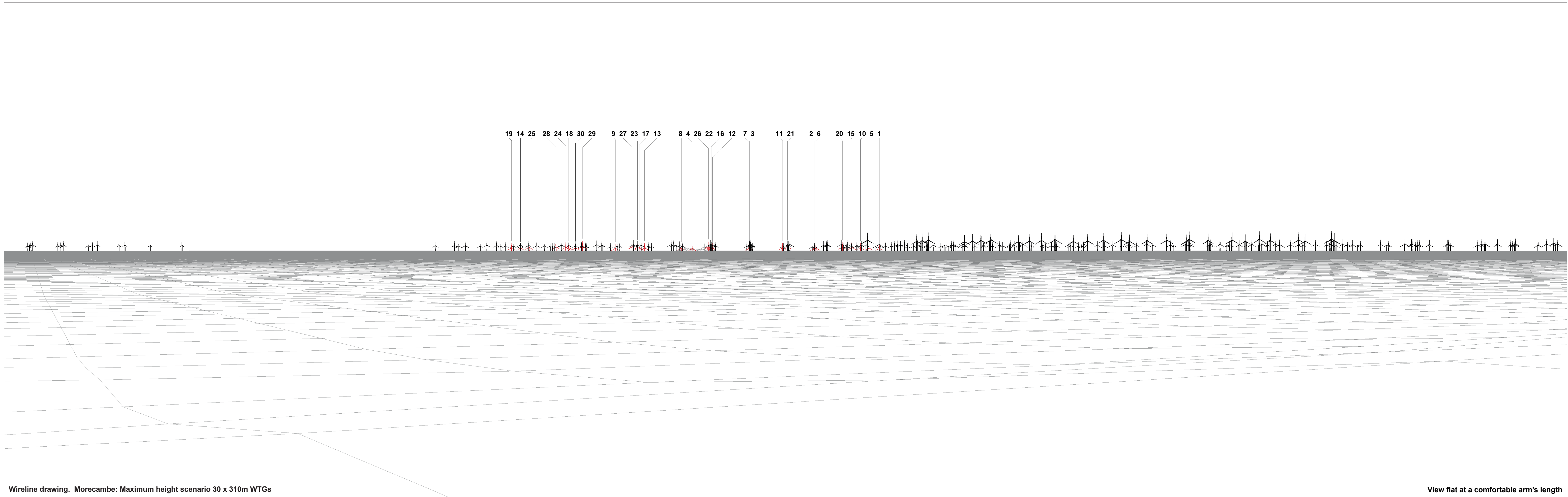




<b>OS reference:</b> 314743 E 477860 N	<b>Horizontal field of view:</b> 90° (cylindrical projection)	<b>Camera:</b> Canon EOS 5D Mark II
<b>Eye level:</b> 9.41 m AOD	<b>Principal distance:</b> 522 mm	<b>Lens:</b> EF50mm f/1.4 USM
<b>Direction of view:</b> 26°		<b>Camera height:</b> 1.5 m AGL
<b>Nearest turbine:</b> 42.207 km		<b>Date and time:</b> 08/08/2022, 17:02

**Figure: 18:25e**  
**Viewpoint 2: Haverigg Point**





Wireline drawing. Morecambe: Maximum height scenario 30 x 310m WTGs

View flat at a comfortable arm's length

<b>OS reference:</b>	314743 E 477860 N	<b>Horizontal field of view:</b>	53.5° (planar projection)	<b>Camera:</b>	Canon EOS 5D Mark II
<b>Eye level:</b>	9.41 m AOD	<b>Principal distance:</b>	812.5 mm	<b>Lens:</b>	EF50mm f/1.4 USM
<b>Direction of view:</b>	206°	<b>Paper size:</b>	841 x 297 mm (half A1)	<b>Camera height:</b>	1.5 m AGL
<b>Nearest turbine:</b>	42.207 km	<b>Correct printed image size:</b>	820 x 260 mm	<b>Date and time:</b>	08/08/2022, 17:02

**Figure: 18:25f**  
**Viewpoint 2: Haverigg Point**





Baseline Photograph

View flat at a comfortable arm's length

<b>OS reference:</b> 314743 E 477860 N	<b>Horizontal field of view:</b> 53.5° (planar projection)	<b>Camera:</b> Canon EOS 5D Mark II
<b>Eye level:</b> 9.41 m AOD	<b>Principal distance:</b> 812.5 mm	<b>Lens:</b> EF50mm f/1.4 USM
<b>Direction of view:</b> 206°	<b>Paper size:</b> 841 x 297 mm (half A1)	<b>Camera height:</b> 1.5 m AGL
<b>Nearest turbine:</b> 42.207 km	<b>Correct printed image size:</b> 820 x 260 mm	<b>Date and time:</b> 08/08/2022, 17:02

Figure: 18:25g  
Viewpoint 2: Haverigg Point